

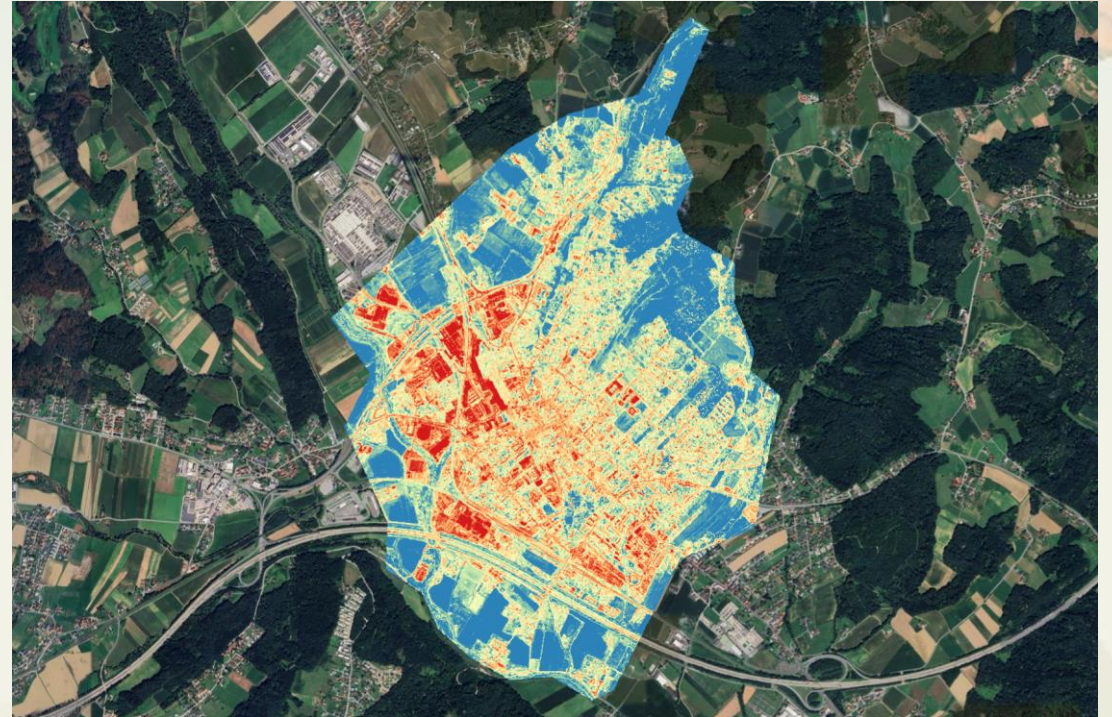
Turning satellite data into urban well-being

Lucija Rešetar



Cities are overheating: property owners pay the price

- Cities are warming **2×** faster
- Up to **30%** of urban areas are owned by large-scale property owners
- EU office buildings spend **€10.6B per year on cooling**



Cooling and climate resilience are a strategic priority

- Heatwaves increase **electricity demand** and **infrastructure stress**
- Rising Cooling & Energy Demand
- Negative impact on tenant well-being and worker productivity
- ESG Reporting pressure



REAL-COOL: AI and satellite intelligence for climate-resilient buildings

- We turn complex satellite data into simple, actionable recommendations



Observe ↓



Analyse ↓

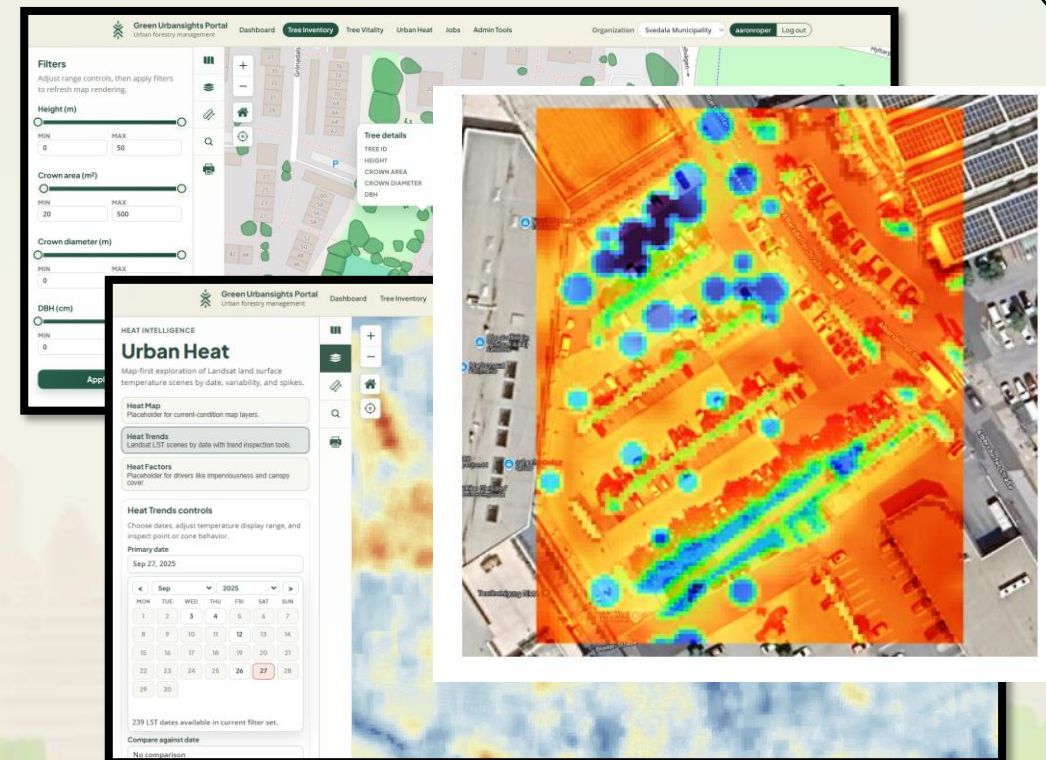


Suggest actions ↓



Monitor & Report

SaaS platform



REAL-COOL Platform Capabilities


- We turn **satellite and geospatial data into practical actions**

- Improving cooling, climate resilience & well-being

 Digital Twin

 Heat Mapping

 Vegetation Monitoring

 Cooling Optimisation

 ESG Reporting



Value proposition

Reduce cooling costs

Strategic tree placement can reduce cooling demand ~10%

Improve tenant comfort

Lower temperatures improve building usability and productivity

Automated ESG reporting

Generate climate and sustainability reports automatically

Optimise green investments

Identify where green infrastructure creates the most impact



We have traction

- **Winner** Nordic PropTech Award 2026 (300 start-ups nominated)
- **Focus B2B** (Wihlborgs & Tetra Pak)
- **500K€** non-dilutive funding
- **50K€** investment: Skåne Ventures
- ESA-BIC Sweden Incubatee
- **Paying** B2G projects delivered
- **Pilots** projects in SWE, DK & DACH
- **Lois** in Germany, Austria & Spain



Strong team with necessary competencies



Let's discuss:
how to increase value
of your property

hello@greenurbansights.com
www.greenurbansights.com

Follow us on 

